



## Long term effects of organic fertilisation and differentiated management practices on the meadows of a mountain farm

B. Jeangros and J. Troxler

Agroscope Changins-Wädenswil Research Station ACW

### Objectives

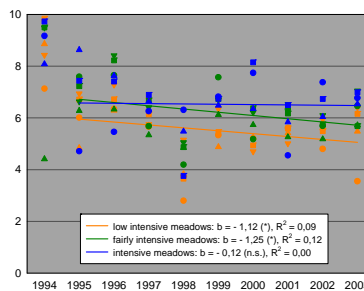
- 1) In general: what are the long term effects of the new Swiss agricultural policy on a mountain dairy farm?
- 2) In particular: what are the consequences of the abandonment of mineral fertilizers and of the introduction of differentiated management practices on the botanical composition and productivity of permanent grassland?

Poster n° 34 - Session n° 2



### Main results

- In general, the botanical composition remained relatively stable, meanwhile the botanical diversity slightly increased in low intensive meadows
- On the long term (1994-2003), the dry matter production of intensive meadows remained stable, but those of less intensive meadows slightly decreased
- The nutritive value of the forage was little affected by the new practices



Annual forage production (t DM ha<sup>-1</sup>) from 1994 to 2003 of the main types of meadows on the dairy farm La Frêtaz